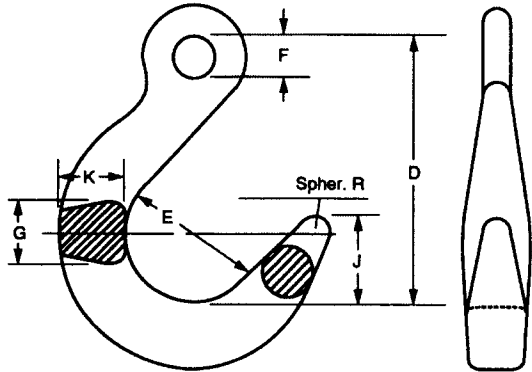


# ACCOLOY® EYE TYPE FOUNDRY HOOKS



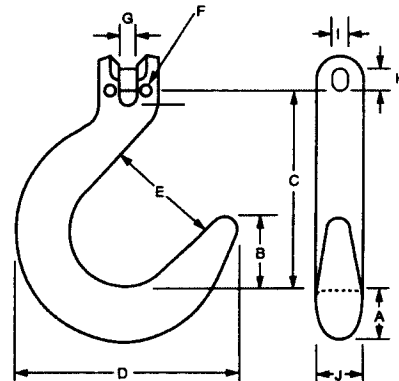
## Specifications

Stock Number	Size of Chain		Accoloy Working Load Limits* Lbs.	Wt. Each Lbs.	D In.	E In.	F In.	G In.	J In.	K In.	Spherical Radius In.
	In.	mm									
5924-54498	9/32	7	4,300†††	2.0	4-3/4	2-5/8	5/8	1	1-9/16	1-1/8	1/4
5924-54499	3/8	10	8,800†††	4.1	5-3/4	3-1/8	13/16	1-1/4	1-7/8	1-3/8	5/16
5924-54500	1/2	13	15,000†††	7.0	6-7/8	3-3/4	1-1/32	1-1/2	2-1/4	1-5/8	3/8
5924-54501	5/8	16	22,600†††	10.5	8-1/16	4-1/4	1-1/4	1-3/4	2-5/8	1-7/8	7/16
5924-04502	3/4	20	28,300††	18.2	9-1/4	4-3/4	1-1/2	2	3	2-1/8	1/2
5924-04503	7/8	22	34,200††	26.0	10-3/8	5-1/4	1-3/4	2-1/4	3-3/8	2-3/8	9/16
5924-04504	1	26	47,700††	35.0	11-9/16	5-3/4	2	2-1/2	3-3/4	2-3/4	5/8
5924-04505	1-1/4	32	72,300††	50.0	12-3/4	6-3/8	2-1/4	3	4-1/4	3-1/4	3/4

††Values shown for these sizes are Grade 80.  
 †††Values shown for these sizes are Grade 100.

# KUPLEX® II CLEVIS TYPE FOUNDRY HOOKS

Kuplex II Foundry hooks when properly used are designed for maximum service such as those applications encountered in foundry work. The throat of the hook is designed to accommodate standard trunnions. The tip of the hook is designed for ease of insertion into holes in the casting.



## Specifications

Stock Number	Hook No.	Size of Chain		Accoloy Working Load Limits* Lbs.	A In.	B In.	C In.	D In.	E In.	F In.	G In.	H In.	I In.	J In.	Weight Lbs.
		In.	mm												
5982-50498	K-498	9/32	7	4,300†††	1-1/8	1-9/16	4-7/16	4-7/8	2-5/8	1/8	5/16	13/32	11/32	7/8	2.1
5982-50499	K-499	3/8	10	8,800†††	1-3/8	1-7/8	5-1/2	5-7/8	3	5/32	7/16	9/16	15/32	1-1/8	4.3
5982-50500	K-500	1/2	13	15,000†††	1-1/2	2-1/4	6-5/8	6-7/8	3-7/8	3/16	9/16	3/4	21/32	1-1/2	8.2
5982-50501	K-501	5/8	16	22,600†††	2-3/16	2-9/16	7-5/8	8-9/32	4-1/8	1/4	11/16	15/16	13/16	1-3/4	14.4
5982-00502	K-502	3/4	20	28,300††	2-3/4	3	8-13/16	9-5/8	4-13/16	5/16	13/16	1-7/32	1	2	24.5
5982-00503	K-503	7/8	22	34,200††	3	3-3/8	9-15/16	10-11/16	5-3/8	3/8	15/16	1-9/32	1-1/16	2-1/4	33.1

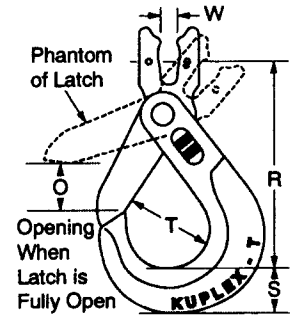
††Values shown for these sizes are Grade 80.  
 †††Values shown for these sizes are Grade 100.

# KUPLEX® II SELF LOCKING HOOK

## Specifications

Stock Number	Hook No.	Size of Chain		Accoloy Working Load Limits* Lbs.	R Reach In.	T Throat In.	S In.	O In.	W In.	Wt. Lbs.
		In.	mm							
5988-52800	KHX7C	9/32	7	4,300†††	4-9/16	1-1/2	1	1-3/4	3/8	1.9
5988-52810	KHX10C	3/8	10	8,800†††	5-3/4	2	1-5/16	2-1/4	1/2	3.4
5988-52820	KHX13C	1/2	13	15,000†††	7-1/8	2-3/8	1-11/16	2-3/4	5/8	6.9
5988-52830	KHX16C	5/8	16	22,600†††	8-3/4	3	2	3-1/4	3/4	11.6

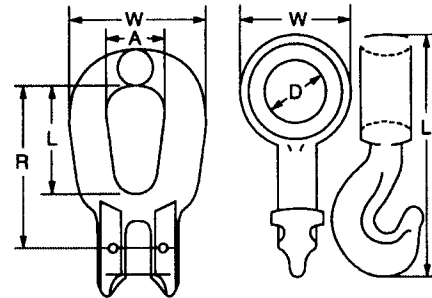
†††Values shown for these sizes are Grade 100.



# KUPLEX® II CHOKE HOOK

The Kuplex sliding-Choke Hook assembly has a much longer life than wire rope. It is more flexible and easier to handle, will not spring back or fray like wire rope.

When slings are used in choke hitch the sling work load limit should be reduced by 20%.



## Specifications

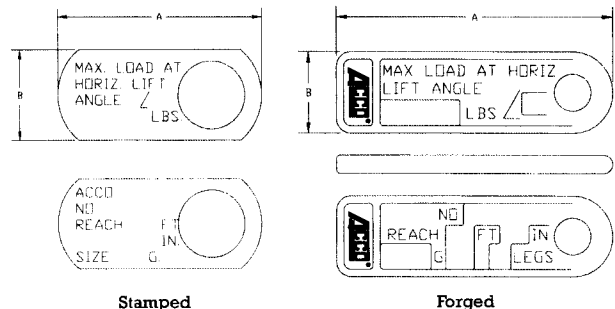
Stock Number	Hook or Link No.	Size of Chain		Working Load Limit, Lbs.* w/G100 Chain				W In.	L In.	D In.	A In.	R In.	Approx. Wt. Lbs.
		In.	mm	Single Chain 90°	Double Chain Slings Type D								
CHOKE HOOK 5987-50710	K710	9/32 3/8	7 10	4,300††† 8,800†††	7,400††† 15,200†††	60°		3-1/32 3-1/32	6-21/32 6-21/32	1-49/64 1-49/64	-	-	5.4 5.4
						45°							
CHOKE LINK 5983-50007 5986-50010	KCL7 KCL10	9/32 3/8	7 10	4,300††† 8,800†††	7,400††† 15,200†††	60°		2-11/64 2-11/64	1-49/64 1-49/64	-	1-1/16 1-1/16	2-19/32 2-51/64	.4 .9
						45°							

†††Values shown for these sizes are Grade 100.

# ACCOLOY® KUPLEX® II METAL IDENTIFICATION TAGS

## Specifications

Stock No.	Description	Finish	A In.	B In.
4409-00009	Forged I.D. Tag w/wire rope & sleeve conn.	Self Colored	4-3/4	1-3/8
4409-00005	Forged I.D. Tag with ring			
4409-00003	Forged I.D. Tag only			
5999-20003	Stamped I.D. Tag w/wire rope & sleeve conn.	Bright Zinc	4	1-3/4
†3419-00300	Aluminum Sleeve	-	-	-
†3584-00310	Wire Rope	-	-	-



†50 piece minimum per bulk packaging.